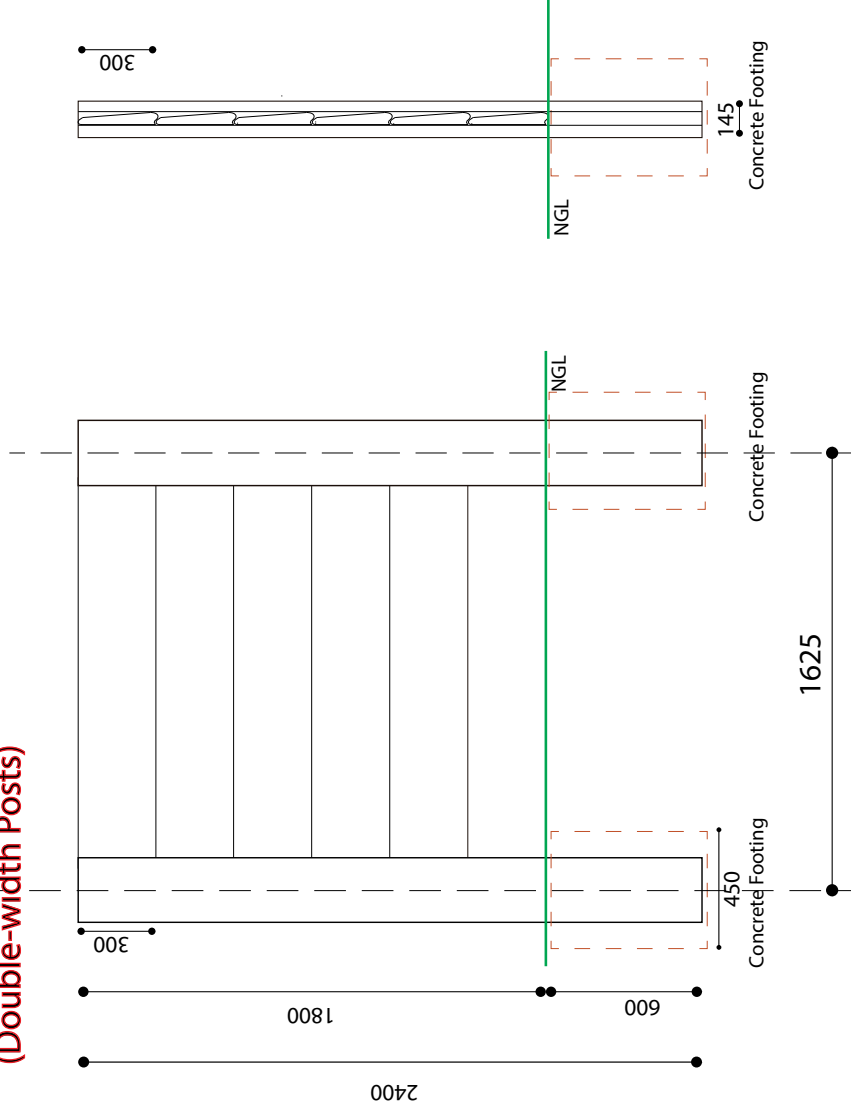


1.8m High Columbo Wall: 6 Slabs Per Section

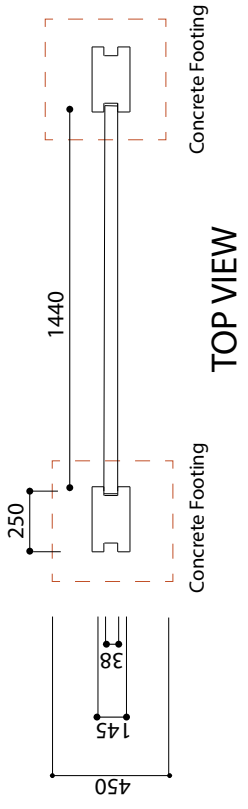


(Double-width Posts)



FRONT VIEW

SIDE VIEW



TOP VIEW

Posts	2400 x 250 x 145
Slabs	1440 x 300 x 55
Concrete	Precast Items to be a minimum of 20-24 mpa at 28 days.
Installation	Foundations to be 450 x 450 x 600 deep. Minimum of 15-20 mpa concrete.
	The posts are spaced 1625mm centers.
	The final structure to be grouted top 2 slabs with sand / cement screed.
	Drainage as required.