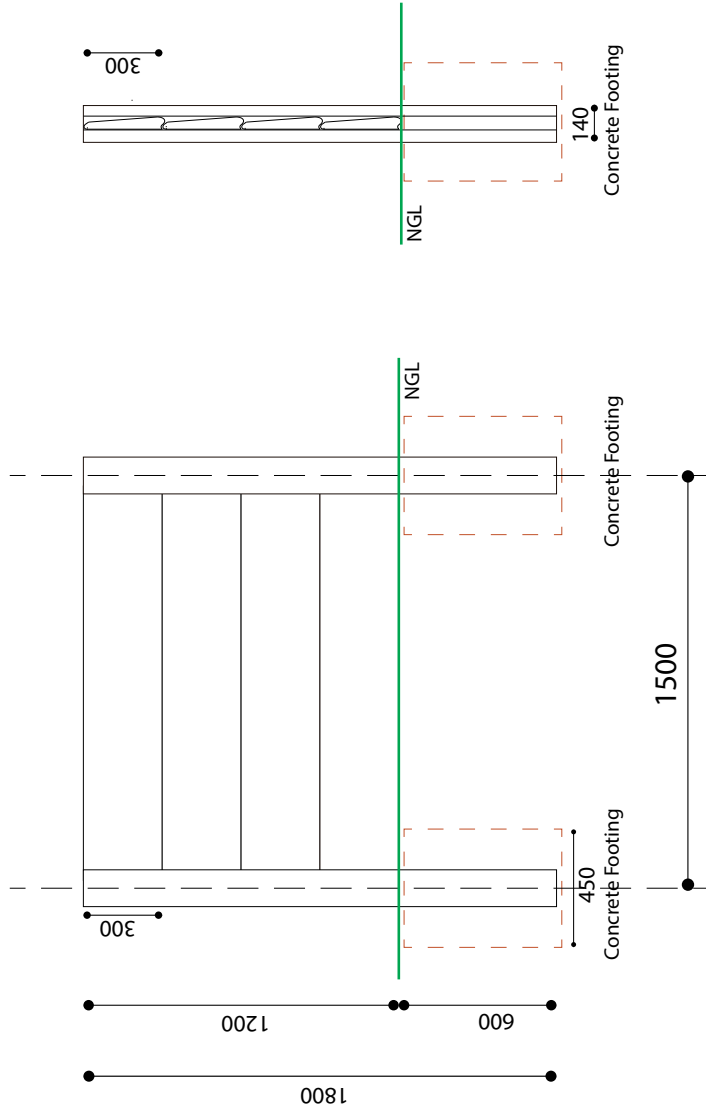
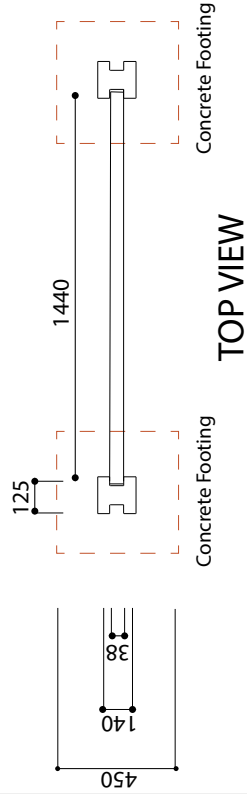


# 1.2m High Precast Concrete Wall: 4 Slabs Per Section



SIDE VIEW

FRONT VIEW



TOP VIEW

Posts	1800 x 125 x 140
Slabs	1440 x 300 x 38
Concrete	Precast Items to be a minimum of 20-24 mpa at 28 days.
Installation	Foundations to be 450 x 450 x 600 deep.
	Minimum of 15-20 mpa concrete.
	The posts are spaced 1500mm centers.
	The final structure to be grouted top 2 slabs with sand / cement screed.
	Drainage as required.